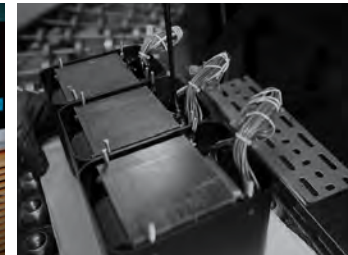


# MI347 power amplifier

- The MI347 7-Channel Digital Amplifier is a dedicated home theater amplifier that delivers an immersive sonic experience that provides a heart-stopping, edge-of-your-seat audio experience.
- Uses highly sophisticated closed loop digital switching amplifiers that are paired with extremely robust power supplies that produce audio performance levels rarely heard in home theaters.
- Has a simplified and understated exterior. But be assured the internal circuitry and components have received the full attention of McIntosh engineers to make you feel like you are part of your favorite movies.
- Rack-friendly 3U height, it can easily be installed in an out-of-sight AV rack via the included rack mounting brackets. Can also be placed out in the open for all to see and enjoy.
- Delivers 250 Watts at 8 Ohms or 300 Watts at 4 Ohms to each of the three front speakers; 125 Watts at 8 Ohms or 200 Watts at 4 Ohms to the less power-hungry 4 surround speakers.
- A highly efficient Class D amplifier, the MI347 does not require noisy cooling fans to maintain nominal operating temperature.
- If more than 7 channels in the home theater, add our MI254 4-Channel Digital Amplifier or MI128 8-Channel Digital Amplifier (both rack mountable) to deliver McIntosh power to all the speakers.
- Includes Power Guard®, Sentry Monitor™, Power Control, and eco-friendly on/off signal sensing.



Edge-Of-Your-Seat Audio Experience.

**McIntosh®**

LEGENDARY PERFORMANCE®

[www.mcintoshlabs.com](http://www.mcintoshlabs.com)

# MI347 power amplifier

## Power Output:

3 Front Channels: 250 Watts into 8 Ohms or 300 Watts into 4 Ohms  
4 Surround Channels: 125 Watts into 8 Ohms or 200 Watts into 4 Ohms

## Total Harmonic Distortion:

0.025% maximum from 20Hz to 20kHz

## Signal to Noise Ratio:

100dB

## Dynamic Headroom:

8 Ohms: 2.5dB  
4 Ohms: 3.5dB

## Damping Factor:

8 Ohms: >85  
4 Ohms: >45

## Frequency Response:

+0, -0.9dB from 20Hz to 20kHz

## Inputs:

7 Balanced  
7 Unbalanced

## Rack Units:

3U

## Overall Dimensions (W x H x D):

17-1/2" (44.45cm) (19" (48.3cm with mounting ears)) x 6-1/16" (15.4cm) (including feet) x 21" (53.3cm)

## Weight:

32.5 lbs (14.8 kg) net,  
47 lbs (24.4 kg) in shipping carton

## For the Consumer's Protection:

In order to ensure the highest level of customer satisfaction, new McIntosh products may only be purchased from an Authorized McIntosh Dealer; and, with certain limited exceptions may only be purchased over-the-counter or delivered and installed by the Authorized McIntosh Dealer. McIntosh does not warrant, in any way, products that are purchased from anyone who is not an Authorized McIntosh Dealer, or that have had their serial numbers altered or defaced.



**Top:** MX100 A/V Processor, MI347 7-Channel Amplifier, and MI254 4-Channel Amplifier installed in AV rack.

**Bottom:** MX100 A/V Processor, MI347 7-Channel Amplifier, MVP901 Audio Video Player, XR100 Floor Standing Speakers, and LCR80 Center Channel Speaker in a home theater. All units sold separately.



## Companion Products

The MX100, MX123, or MX170 A/V Processor, MVP901 Audio Video Player, XR100 Floorstanding Speakers, LCR80 Center Channel Speaker, XR50 Bookshelf Speakers, WS500 or WS300 In-Wall Speakers, and CS200 In-Ceiling Speaker are logical companions for the MI347 Power Amplifier. Your Authorized Dealer can provide additional information on other McIntosh products.

To learn more, please call us at 1.800.538.6576.

# McIntosh®

LEGENDARY PERFORMANCE®

www.mcintoshlabs.com